

Year 4 Information PowerPoint



Who's who in Year Four?



Rowan Class will be taught by Mrs Colby and Miss South.



Ash Class will be taught by Miss Gray

Please note that these arrangements are subject to change based on other considerations and the needs of the school, e.g. staff absences.

Specific Teaching Arrangements



Miss Blackwell and Mrs Georgieva will be supporting across Year Four.

Mr Davies and Miss Gavin will be teaching in Rowan and Ash on a Monday afternoon.

Engagement with the school

- Green Ridge Weekly Round-Up – sent home each Friday via e-mail to all parents/carers
- Book look opportunities for parents/carers to come into class and see how pupils are doing – held each half-term at a designated date published in newsletter at pupil-drop off (between 8.35-9.00am) [Note: book looks do not take place in the half-term when there is a pupil learning review]
- Pupil Learning Reviews – October and February
- Annual Report to parents/carers - July

Typical timetable

Day	8.40-8:55	9.00-9.25	9.25-10.25	10.25-10.45	10.45-11.00	11.00-12.00	12.00-12.30	12.30-1.15	1.15-1.25	1.25-2.15	2.15-3.05	3.05-3.15 pm	
Monday	Daily 5 Maths fluency	Reading Skills	English	Whole-school Assembly	Break	Maths	SPaG (Grammar and Punctuation)	Lunch	Reading	PPA PE	PPA RE	Story Time	
Tuesday	Daily 5 Maths fluency	Reading Skills	English	Break	PE (Swimming) – Tuesday/Wednesday slots		Reading		Maths	Computing			
Wednesday	Daily 5 Maths fluency	Reading Skills	English	Break	Class Assembly	Maths	SPaG (Grammar and Punctuation)		Reading	Science	Times Tables (2:50 – 3:05)		
Thursday	Daily 5 Maths fluency	Reading Skills	English Library/Handwriting	Break	KS2 assembly	Maths	SPaG (Spelling)		Reading	PSHE 1:30-2:00	MFL 2:00-2:30		Music 2:30-3:05
Friday	Daily 5 Maths fluency	Reading Skills	English	Break	KS2 Celebration assembly	Maths	SPaG (Spelling)		Reading	History / Geography	Art/DT		

Site Layout



Start of day routines in Year 4

- Classroom doors open at 8.40am. School starts promptly at and 8.50am.
- Pupils' complete morning fluency as part of the maths curriculum between 8.40-8.50am. Where possible, please ensure that your child does not miss this opportunity.
- Doors will close at 8.50am and this is when the register begins. We are asked that once doors close, they are not re-opened for any late pupils. Late pupils must go via the office to sign-in and give a reason for lateness.
- We ask that you leave children at the door in the mornings and allow children to walk into the classroom by themselves.
- Parents/carers can pass on any quick messages to staff at the door in the mornings. However, if parents/carers do need to speak with your child's teacher about something that is urgent and in private, then please do make an appointment through the main office by telephone or e-mail.

End of day routines in Year 4

- The school day finishes at 3.20pm. Pupils will only be allowed to leave with an adult who is on the school's permission list. Please be patient with us in the first few weeks should we need to check before allowing a pupil to leave, as many new adults in year-groups may not know all faces around the school!
- To ensure your child's safety, we will not release them until both adult and child have seen you.

Things to bring

- PE Kit – this will be sent home each half-term, and will be kept in-school each week, unless you let us know you want it home on a weekly basis.
- Named swimming bag
- Named water bottle
- Small ruck-sack
- Weather appropriate items – hat in sunny weather, coats for wet/cold days
- **Please do not let your child bring in any toys or personal belongings unless we have specifically requested!**

Things to bring

Pencil case	<ul style="list-style-type: none">• Soft material• Small enough to fit flat into an A4 draw in the classroom• <u>Without</u> excessive patterns/features to avoid it becoming a distraction
Pencil/s	<ul style="list-style-type: none">• HB pencil
Pen/s	<ul style="list-style-type: none">• A <u>black</u> handwriting pen (e.g. a berol pen) or a fountain/cartridge pens (with <u>black</u> ink cartridges only)• No biros• No roller-ball pens• No gel pens
Colouring pencils	<ul style="list-style-type: none">• Basic coloured set
Ruler	<ul style="list-style-type: none">• 30cm ruler that folds away into 15cm length
Rubber	<ul style="list-style-type: none">• No more than two rubbers
Sharpener	<ul style="list-style-type: none">• 'Canister' type sharpener which collects pencil shavings in a pot
Green and Blue biro	<ul style="list-style-type: none">• Any standard green and blue type biro (e.g. Bic or Staedtler) for children's self-editing and corrections

PE/Games

- PE/Games takes place on Monday (with Mr Davis)
- Children need their full PE kits in school for the whole-week.
- Children should be prepared to go outside whatever the weather for Games, so please ensure they have a tracksuit/jumper etc. to put on over their normal PE shorts and T-shirt. Trainers are definitely required for this lesson!
- Children cannot wear normal PE kits on their own outside in the winter (due to the weather).

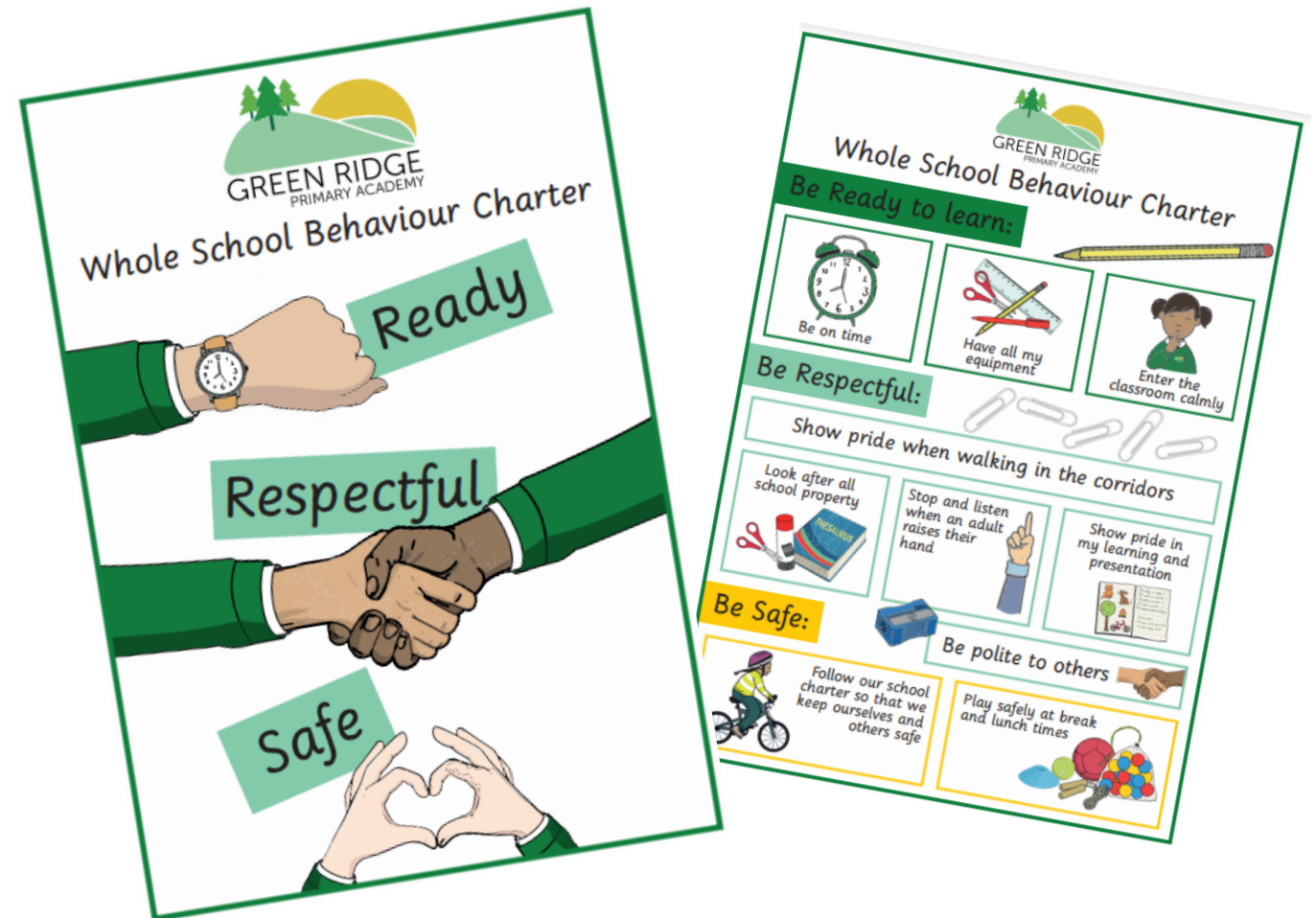
School behaviour charter, values and learning superheroes

Use kind words and actions		Listen to one another		Try our best	
Honesty	Friendship	Forgiveness	Responsibility	Gratitude	Respect



Behaviour Policy

- We have the right to learn in a safe and trusting community in which effective learning can take place. As part of our commitment to this right, we have reviewed our behaviour policy and simplifying our school charter to enable all our children to embrace them.
- Our new behaviour charter is:
READY, RESPECTFUL, SAFE



Behaviour Policy

Rewards and positive reinforcement

- Verbal praise
- Sharing pupils' work with other staff or pupils to celebrate
- Communicating praise to parents via phone call or written correspondence
- Certificates
- Positions of responsibility, such as prefect status or being entrusted with a particular decision or project
- Superhero Shake
- Learning dots
- House points

Attendance

At Green Ridge we know that good attendance is the key to successful schooling and we believe our pupils can be amongst the best. Attending school every day will help give your child the best possible start in life.

Did you know?

- 90% attendance is equivalent to missing 100-hour long lessons.
- If you take your child on a two-week holiday in term time, attendance for the year immediately drops to 95%.
- A two-week holiday in term time means your child has approximately 50 hours of missed work to catch up on.
- 90% attendance is equivalent to half a day's absence each week: four weeks over the year and half a year's absence over five years.
- 90% attendance is equivalent to a full month off school in a year.
- Missing just 10 minutes of school a day is the same as missing two weeks over the year.
- You can be fined up to £2,500 if your child misses too much school.

Attendance Ladder

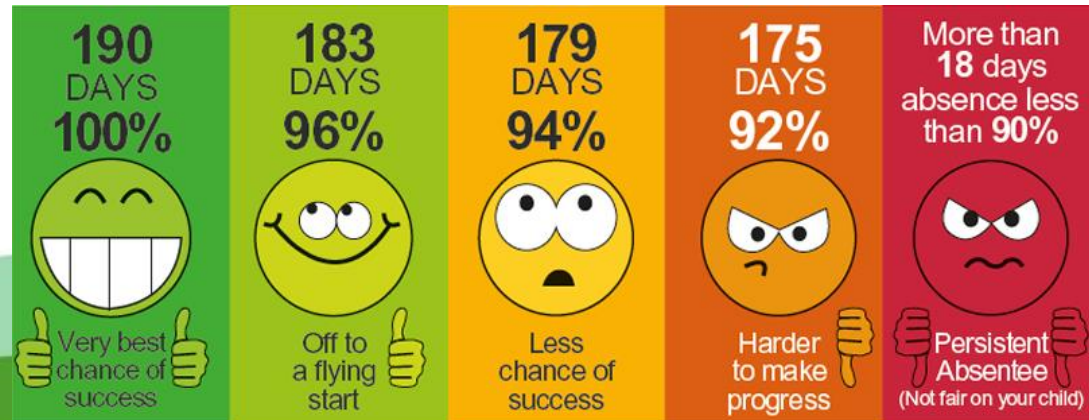
How close are you to reaching the top?



Attendance

How can I help my child attend school regularly?

- Talk to your child about school
- Take a positive interest in your child's work including home learning activities
- Keep in touch with school staff
- Make sure everything is ready for them the evening before or first thing in the morning so there is no worry about missing uniform, home learning and being late.
- Aim for 10 hours sleep a night for your child. This will make the following day at school easier for them to cope with.
- Make sure your child eats breakfast, it helps them stay alert at school.
- Help your child develop routines.
- Develop a night-time routine that involves checking their homework, reading & bed.
- Try and make sure that any medical appointments are booked for outside of school hours where possible.

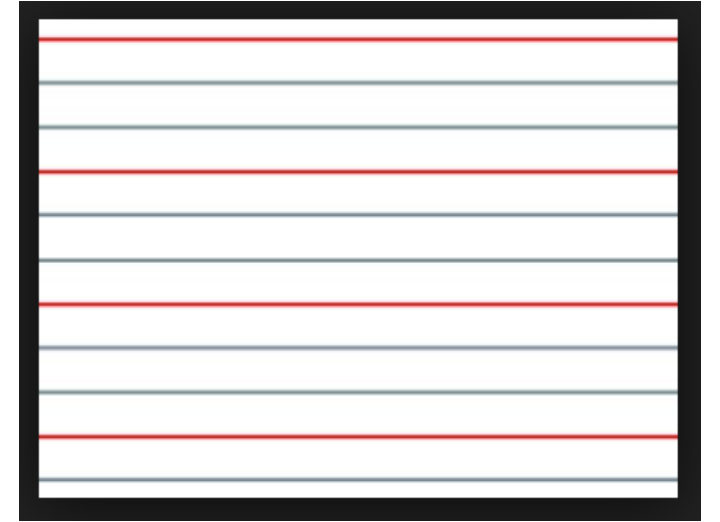


Learning themes across the year

- Autumn 1 –Anglo Saxons
- Autumn 2 – Moving Mountains
- Spring 1 – Violent Vikings
- Spring 2 – Spectacular Spain
- Summer 1 – Off With Her Head!
- Summer 2 – Amazing Amazon

Presentation

- There is a focus on presentation across the school, particularly on layout and expectations of what the children produce.
- Children will need to write in black handwriting pens in KS2 (except in Maths, where a pencil is used), and we will insist on the highest standards, so children take pride in their own work and learning.



Reading expectations- Year 4

- The children will be able to choose from the colour banded books based on their fluency level. To ensure that reading at home is an enjoyable experience and supports the children's confidence and fluency, we will ensure your child can read 95% of the words within these books.
- We will no longer use reading records to ask you to record when you have read with your child at home. We know this was an added piece of admin for parents and we would much rather you just enjoy the reading journey with your child at home without the need to record what you have done. When you read with them, please listen with interest and, most importantly, encourage and praise, enthusiastically acknowledging your child's achievement.
- The children will complete reading daily in school and will be heard by adults within their class. Each child will be heard read once a week by an adult during these sessions.

Reading expectations

- In addition, your child will also bring home a Sharing Book, which they will have chosen themselves from the library. This is a book that your child may not be able to read on their own but that you can both read and enjoy together. It will not be a book that has been practised at school. While reading, you can discuss the pictures, predict what might happen next, use different voices and just enjoy the story or new facts if it is a non-fiction book. The main idea of the Sharing Book is to have fun reading and promote a love of books!
- The children will visit the library weekly.

Home learning expectations

- Children in Year Four are expected to read daily at home, complete a quiz and use TTRS to practise their times tables. It will be set on a Thursday night and due on Wednesday.
- Class teachers will monitor TTRS to ensure pupils are engaging with the app. There are also fortnightly certificates for the 'Quickest Rockstar' and the 'Hardest Working Rockstar'.
- Each week, the class teachers will check the participation of the quiz on a Wednesday morning and children will be asked to complete these in their own time.
- There will also be a selection of optional home learning tasks set on Teams. There will be a variety of activities including writing, creative and experience tasks. Children can either upload their work on Teams or bring it into school if it is a physical piece of work such as a drawing or model.

How parents/carers can support at home

- We ask that you encourage your child to read as often as possible at home to help develop their love of reading, their fluency and their comprehension skills.
- We also ask that, as they will have the MTC in Year 4, that they also practise their Times Tables often as possible – this can be in ways other than via TTRS.

Trips, visits and enrichment

- 11B411 Wildlife Warriors Friday, 14th February 2025
- Tudors- Hampton Court Palace – Friday, 9th May 2025
- Hare Krishna Temple – Friday, 6th June 2025
- 11B411 Sleeping Under the Stars- Thursday, 12th June 2025